

ERNST HAECKEL:

Born: 16 February 1834, Potsdam, Germany

Died: 9 August 1919, Jena, Germany

Full Name: Ernst Hienrich Philip August Haeckel Education: University of Jena

He used Printmaking in his art

He was a :biologist, naturalist, philosopher, physician, professor and artist

He was inspired by sea creatures such as jellyfish and ammonites.

His Artwork was heavily influenced by Charles Darwins work in the Galapagos Islands

Some of his Artwork is called: Actinia, Orchidae, Trochilidae, Ascidia, Arachnida.

He named nearly 150 new species of radiolarians

His artwork was intricate and detailed.

He is highly interested in biology, he also taught it.

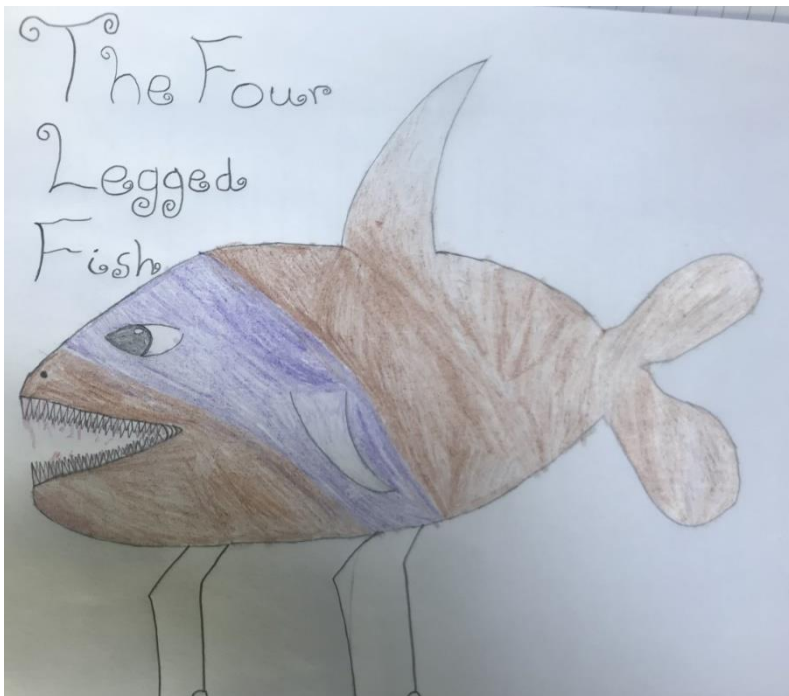
40m
4 school buses

10m

Name: The Jeopardous Psychoneurotic
-Mythological-Creature.

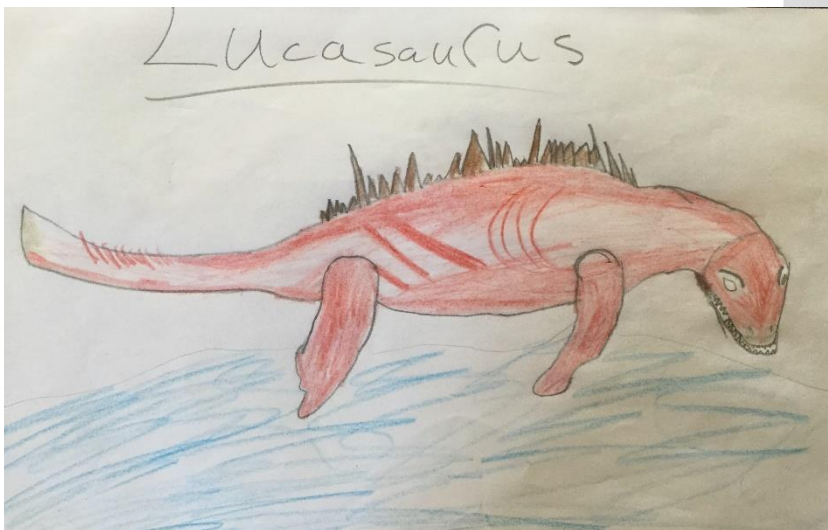
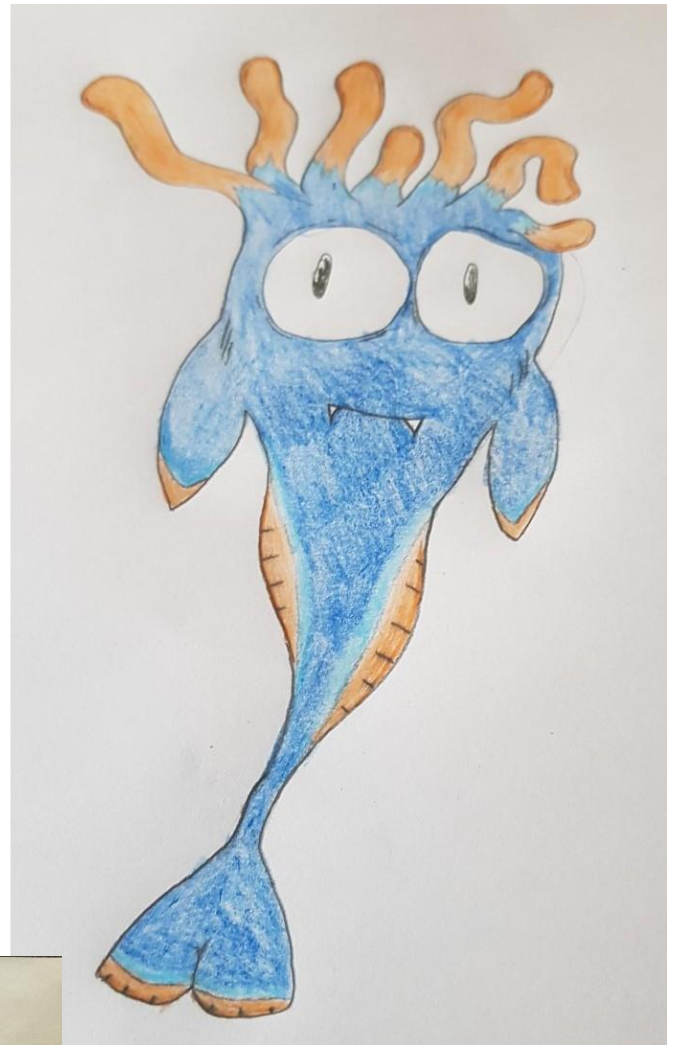
It stands for The dangerous psychotic mythical creature. It hunts by impaling the creature or fish with it's giant horn then puts it on the ocean bed and the bottom curled up loop snaps the food into millions of pieces and eats it all. It uses the bright colours to trick sea creatures and snaps at the creature and kills them as quick as a bullet.

Year 8 Ernst Haeckel Inspired Work



THE multidigestive tiger fish!

The multidigestive Tiger Fish was found in the midnight zone not many creatures can survive in the zone. This MTF eat on seaweed it's a herbivore however this is no ordinary fish. Its digestive system is built to tear throats. It can through the triangular space on the end of its tail. It sucks all the nutrients out of the coral and seaweed. It travels through its tail which can reach up to 3m long! It excretes through its mouth on the front to the MTF. On its main body this creature has 370 per those gaps and change colour this attract moles and this is how it displays. It can kill fish and other animals with the 3 triangular shaped points on its tail. It doesn't eat them though it only does this is the creature is a throat. This fish is dangerous to humans it it touches you with one of its spikes when we discovered it we couldn't touch it while observing it we found that its peculiar shaped body enabled it to swim slowly and without to predators and food. This creature was amazing!



The task was to design a sea creature. Give it a name and explain some its key features.

