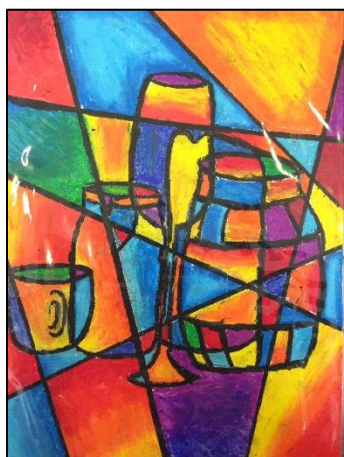


Art homework task sheet – Sum 1 year 9



Task 1: Draw the outlines and basic details of a still life (you may create your own or look at one on Google images). Using a ruler, draw straight lines across the page so they split the drawing and background into geometric shapes (triangles, quadrilaterals etc.) colour in each section, ensuring you blend your colours from light to dark.

Task 2: Go onto <http://www.picassohead.com/> and create your own Mr Picasso Head. You can either re-draw your creation or print it off.



Task 3: Choose an object with an interesting (musical instrument, power tool etc.) Shade it in using warm colours (try to blend your colours e.g. red into orange, orange into pale yellow/orange etc.) Colour your background in cool colours, again blending. Cut into about 7 sections and re-stick onto another sheet.

Task 4: Draw out all the facial features from different angles and in different sizes. Fill in each feature with bright colours. Draw an outline of a face with hair and colour in. combine natural colours with primary and secondary colours. Stick on the features to create a Picasso-style portrait.



Regular task

Stretch and challenge task