

	MON 16 TH SEP	TUES 17 TH SEP	WED 18 TH SEPT	THUR 19 TH SEP	FRI 20 TH SEP
AM					
Notes		Careers Interviews			
Assembly	Y11	Y10	Y9	Y8	Y7
Lunchtime Sports					
Lunchtime Groups		More2life Club Rm 5			
After School Clubs	All Yrs Hockey 3.15-4.15 Y9 Football Y11 Football 3.15-4.15		Y7 Football 3.15-4.15 Y8 Football Y10 Football <i>Cancelled</i> Y8 Football Match v FEHS (Away) Pick up 6.15 Y10 Football Match v FEHS (Home) Pick up 5.30 Y9-11 Netball 3.15-4.15	Y7/8 Netball 3.15-4.15 Y9 Football Match v FEHS (Home) Pick Up 5.30 Y11 Football Match v FEHS (Away) Pick Up 6.15 Y9/11 Netball Match v Wym College (Home) Pick Up 5.00 Y10 and Y11 Art 3.15-4.15	
Events	Parents Forum 5.30pm				
Ambs	James W Archie M	Lily-Mae C Issy C	Isabel L Leah N	Rory S Jamie C	Marta T Katie A

Parents Forum Monday 16th September 5.30pm

All parents are welcome. It will be an open agenda for parents to bring issues they wish to discuss.

Grease

Monday 16th September 3:30-4:30pm Grease whole cast workshop in the hall for all those who are interested in being in the show.

Star of the Week

- Y7 Alfred H 7CO – For showing good learning habits and for helping others at the start of the term.
- Y8 Alex B 8T – Has made a really positive start to the year after some rough patches last year on report.
- Y9 Mia F 9CO – Fantastic, polite, helpful, always early to registration. Loves reading and can be found reading lining up for class.
- Y10 Ronnie S 10CO – For making a positive start to Year 10.
- Y11 Jadyn S 11B – For making a positive start to Year 11.

Latest Items of Lost Property

Navy Purse (Found on Bus 3)
Black Purse
Cream Metal Water Bottle

Headphones
Thin Purple and White Bracelet
Grey 'ion' Plastic Water Bottle

Attendance

Weekly

Y7 - 98.66%

Y8 - 93.42%

Y9 - 96.72%

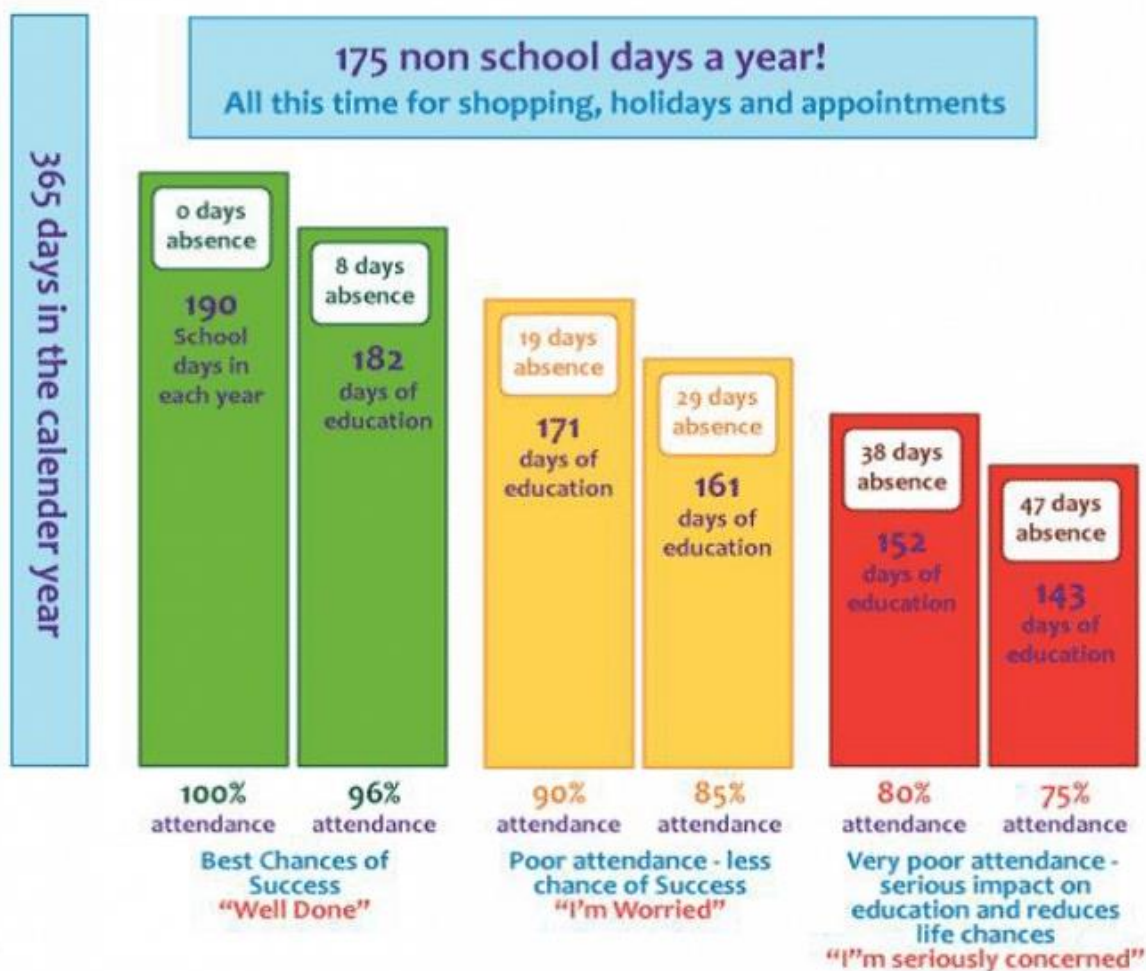
Y10 - 95.42%

Y11 - 85.44%

Whole School 94.42%

EVERY DAY COUNTS

We would like to remind all parents and carers of the importance of good attendance and punctuality at school. Evidence shows a clear link between attendance and attainment and we are asking for your continued support and commitment to help ensure your child gets the most out of their education and improve attendance. Below is a useful illustration to show how missing just a few days can affect your child's attendance.



Please contact the schools Pastoral Managers to discuss any issues you may have regarding your child's attendance as soon as they arise – support is available.