

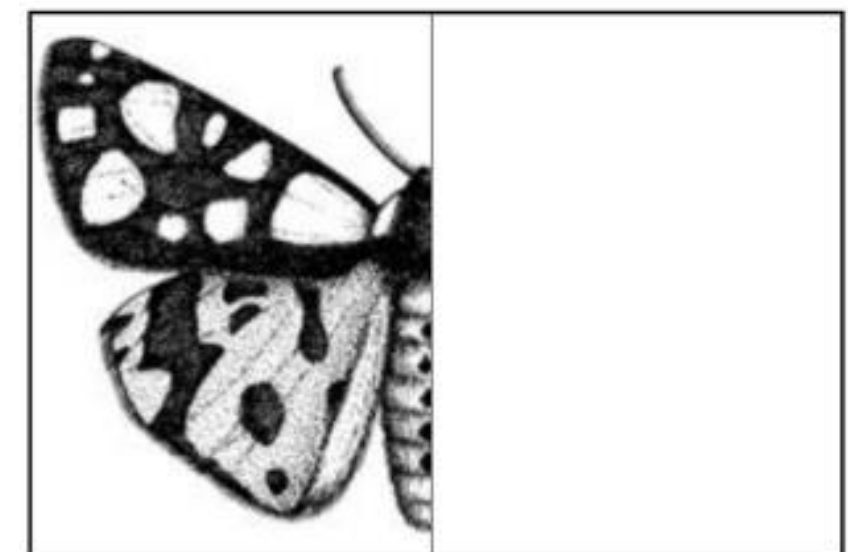
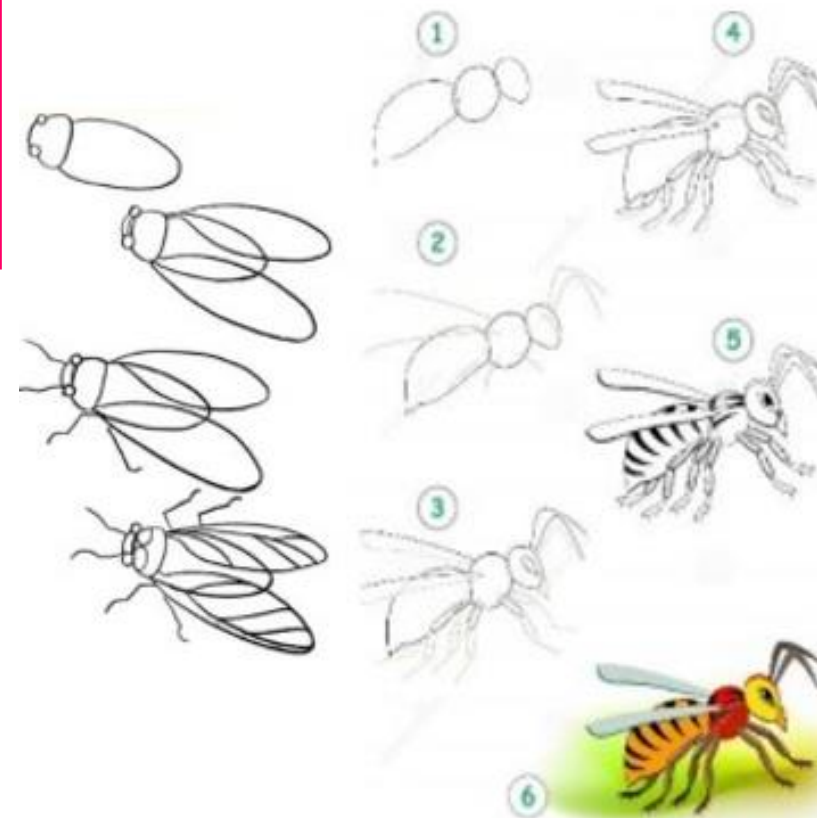
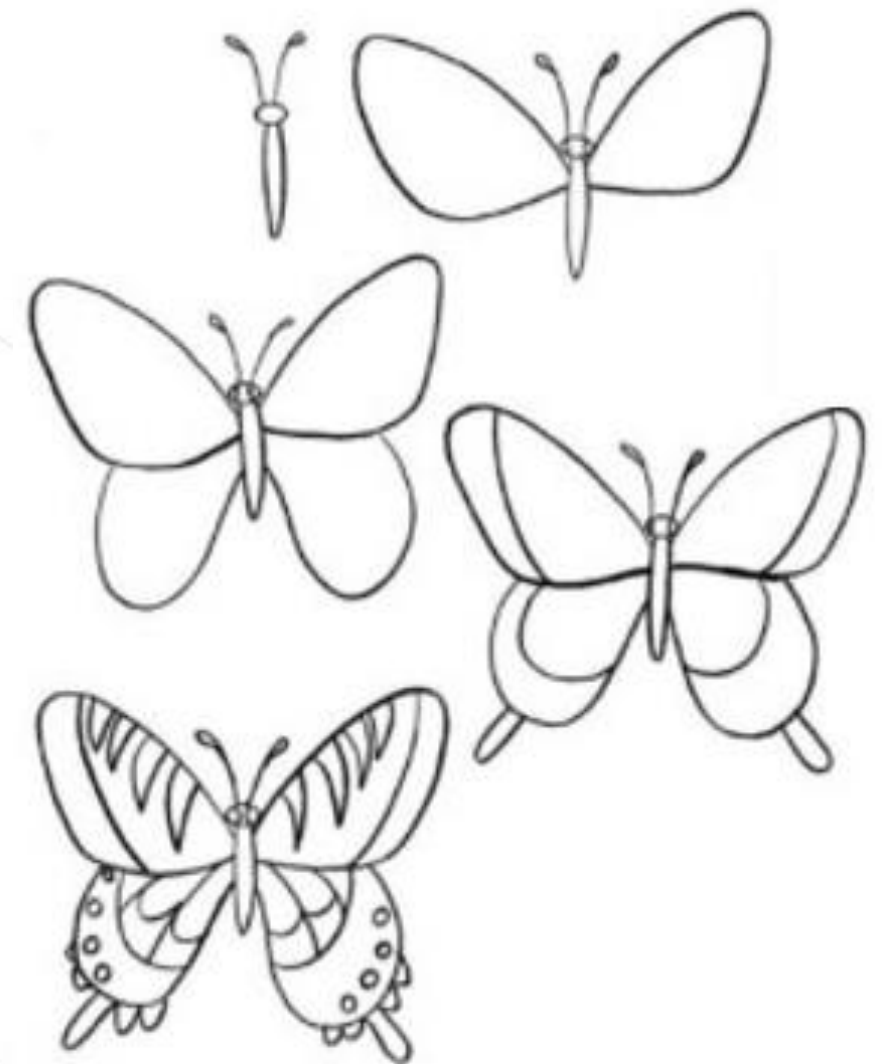
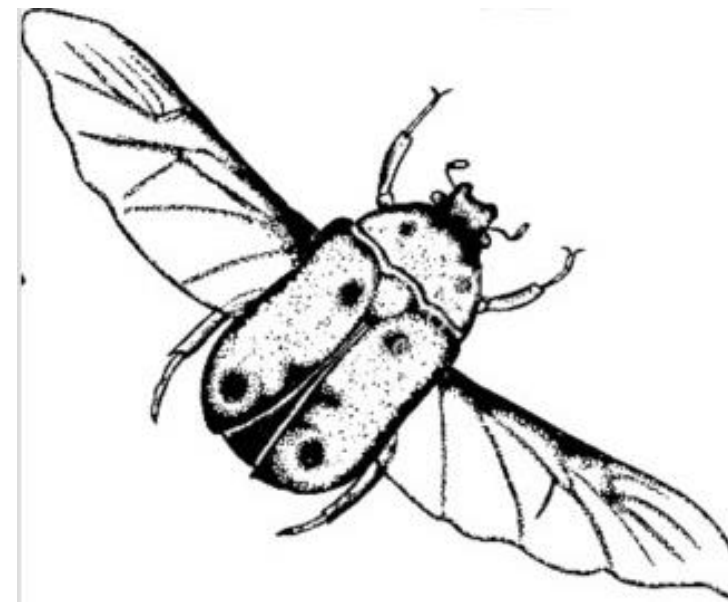
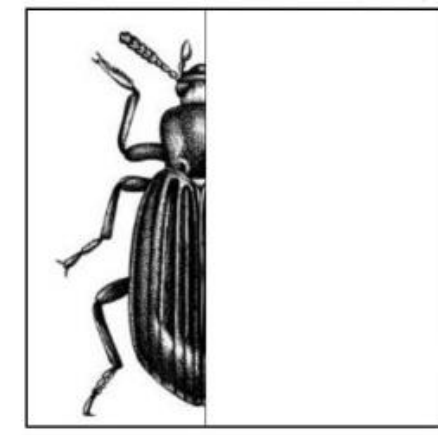
Name:

Class:

Year 7 ART
Insect drawing project
20th April– 22nd May

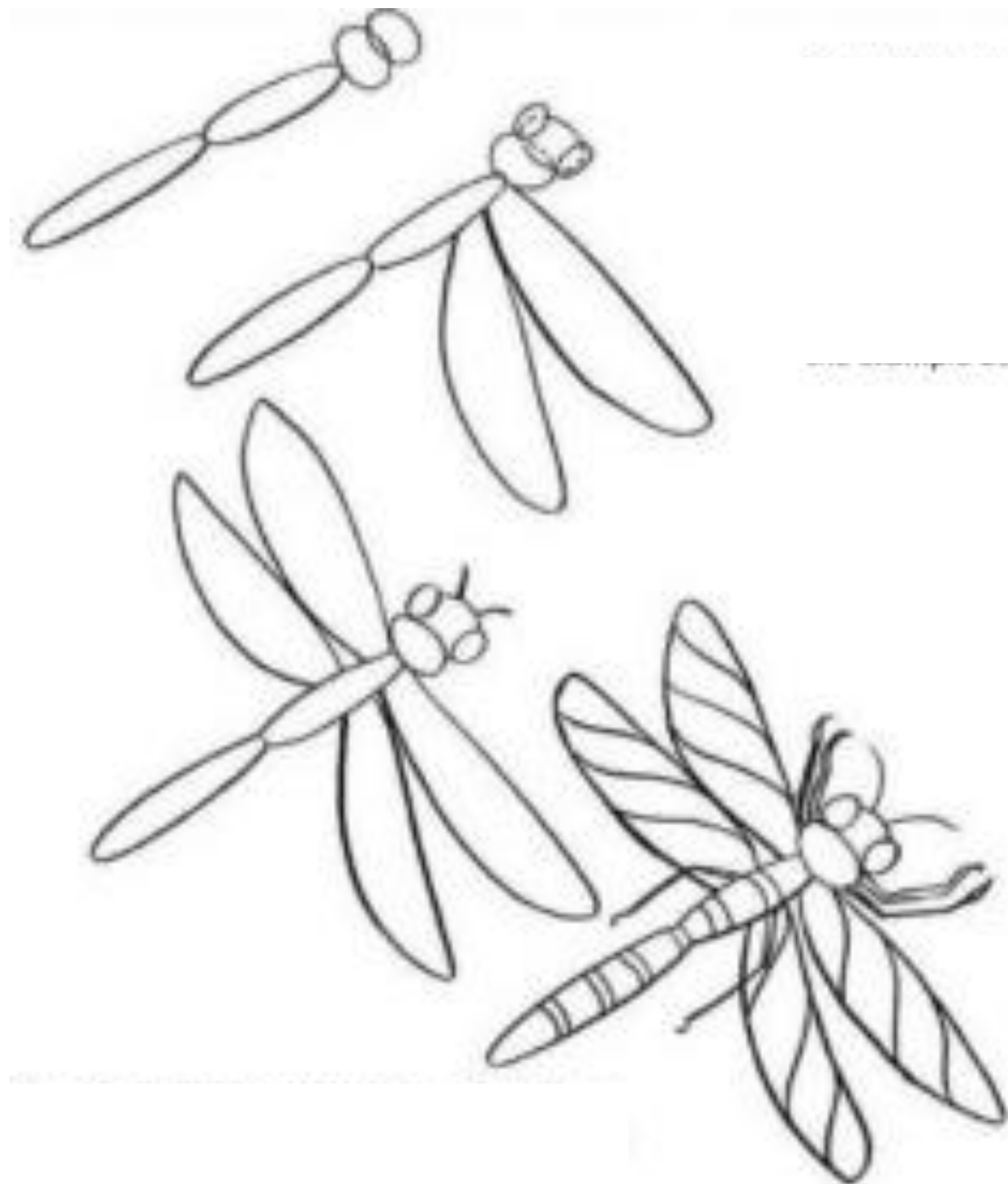
Lesson tasks: *Complete each bullet point per lesson*

- Complete drawing tasks 1 and 2 (dragonfly and butterfly) - 1 hour
- Complete for HW
- Complete the stretch and challenge drawing tasks (further insect studies) - 1 hour
- Complete the artist research task 1 (Rosalind Monks) – 1 hour
- Complete the half and half insect drawings tasks 1 (moth and bee). If you complete the task early, attempt the extension task -1 hour
- Half and half stretch and challenge task 2 (dragonfly and beetle) – 1 hour



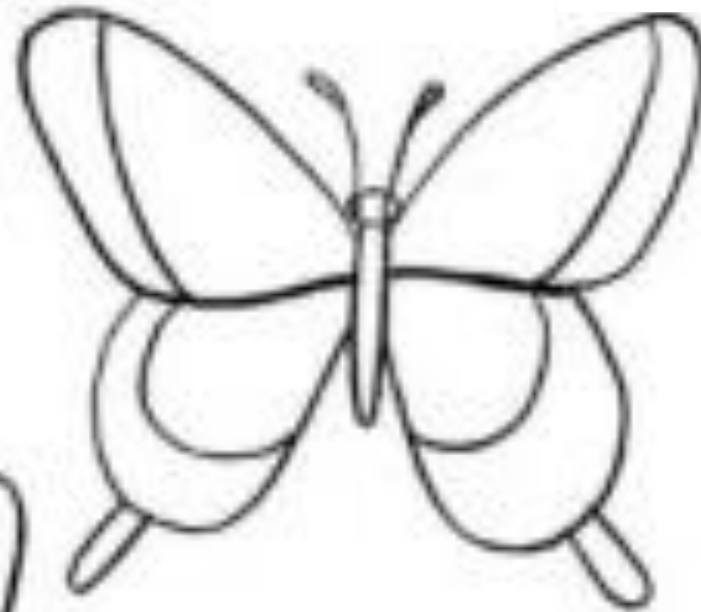
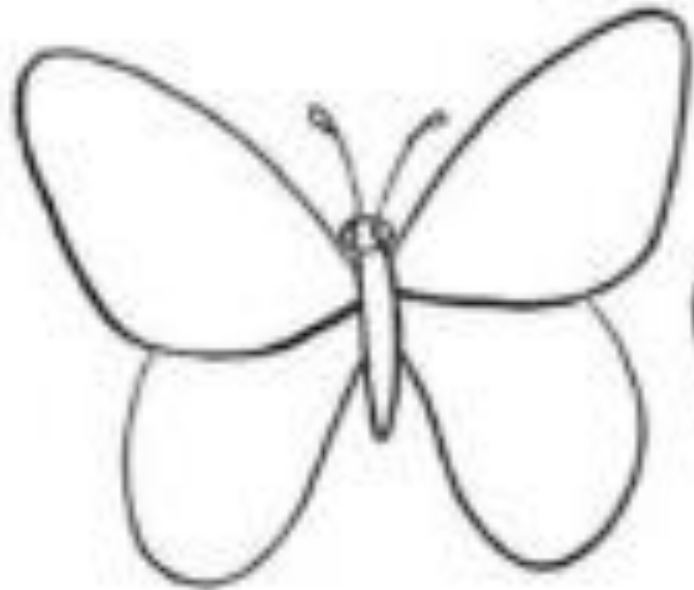
Drawing task 1: Use the step by step drawing guide to create a dragonfly drawing

- Create the drawing in the box provided – if you are unable to print this work, draw a neat presentation box on plain paper and complete your drawing there
- Once you have completed this drawing, you should apply colour using at least 3 different **shades**
- Research dragonflies and write down 3 interesting facts about them



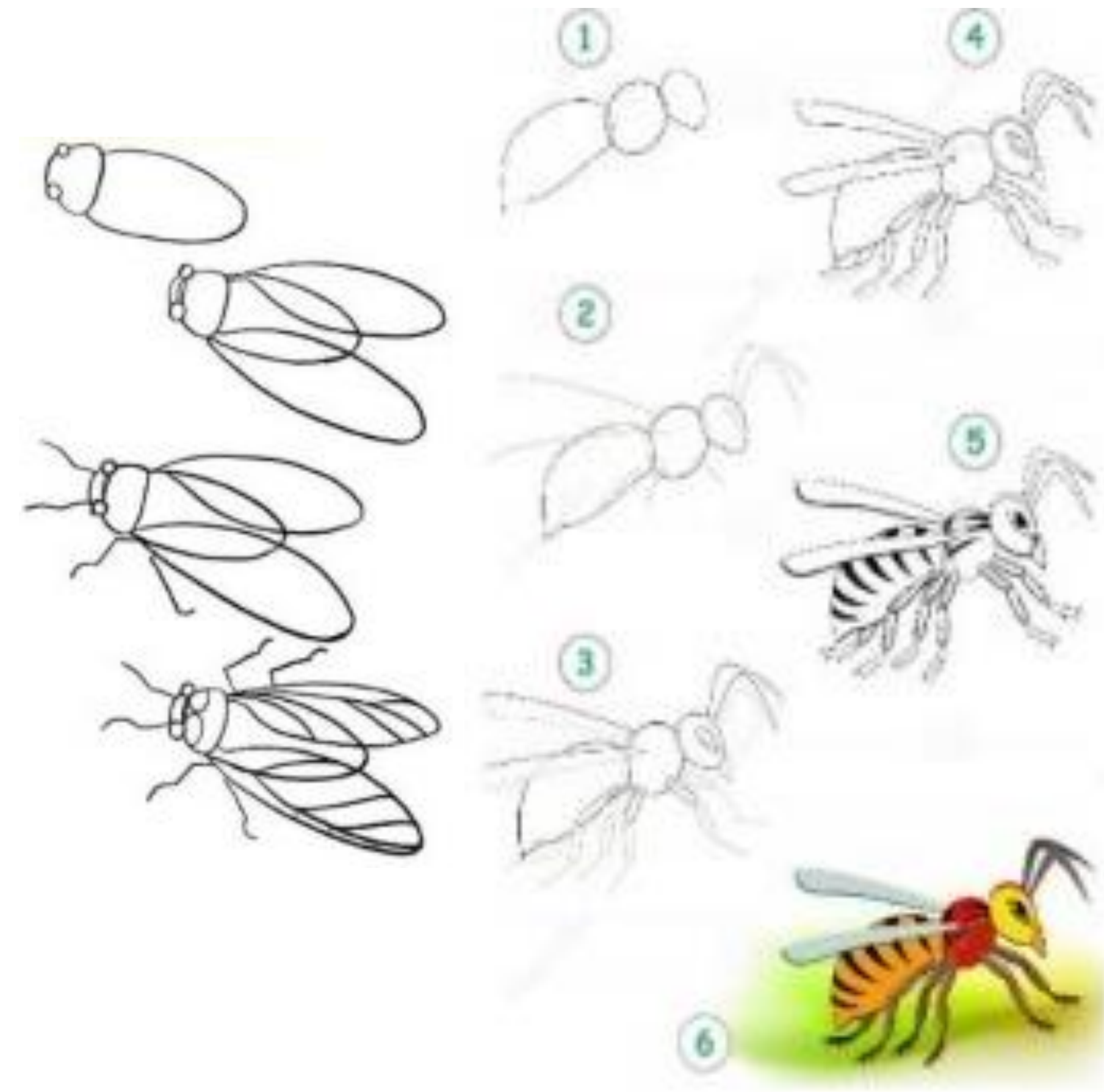
Drawing task 2: Use the step by step drawing guide to create a butterfly drawing

- Once you have completed the first 4 steps, create your own pattern designs for the wings
- Once you have completed this drawing, you should apply colour using at least 3 different **shades**
- Research butterflies and write down 3 interesting facts about them



Stretch and Challenge drawing task: Use the step by step drawing guide to create further insect drawings

- Create the drawings in the boxes provided — if you are unable to print this work, draw neat presentation boxes on plain paper and complete your drawings there
- Once you have completed these drawings, you should colour the bee in realistic colours and the fly in abstract colours of your choice
- Research butterflies and write down 3 interesting facts about them



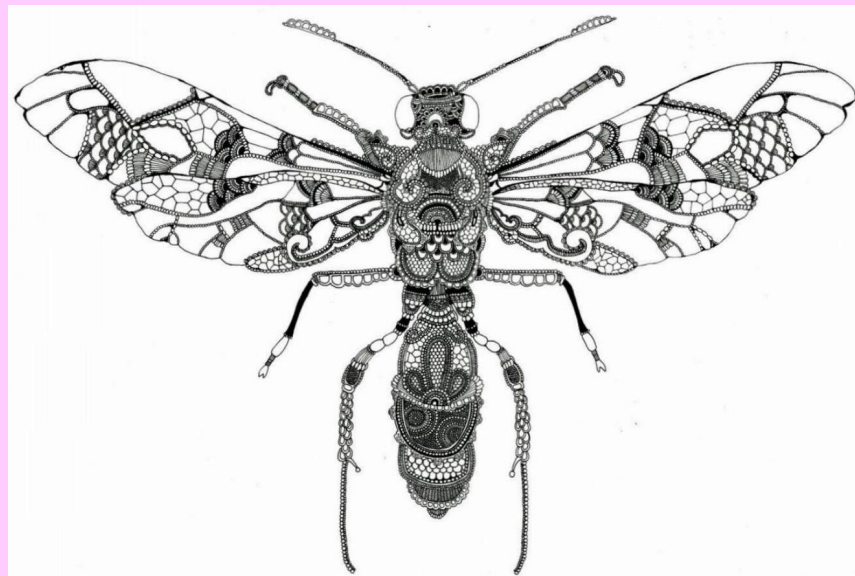
Artist research task 1: Your artist research page should include:

- A colourful background (look at the artist's work. Can you create an exciting pattern that you can decorate your page with that represents the artist's style? E.g. doodle designs)
- A title with the artist's name
- Pictures of the artist's work
- Factual information about the artist

If you do not have the Internet, you may use the artist information page at the back of the booklet and cut some of the pictures to stick onto your work

You may do this on the computer, or write it out on paper

An example of a page layout is shown opposite 



Next steps:

Create a response to the artist (copy a drawing of their work). Use a full page to complete this

Write an evaluation of your response (WWW, EBI)

Explain what you think of the artist's work overall (how well does she use pattern, line, shape etc.)

Rosalind Monks



Factual information about the artist

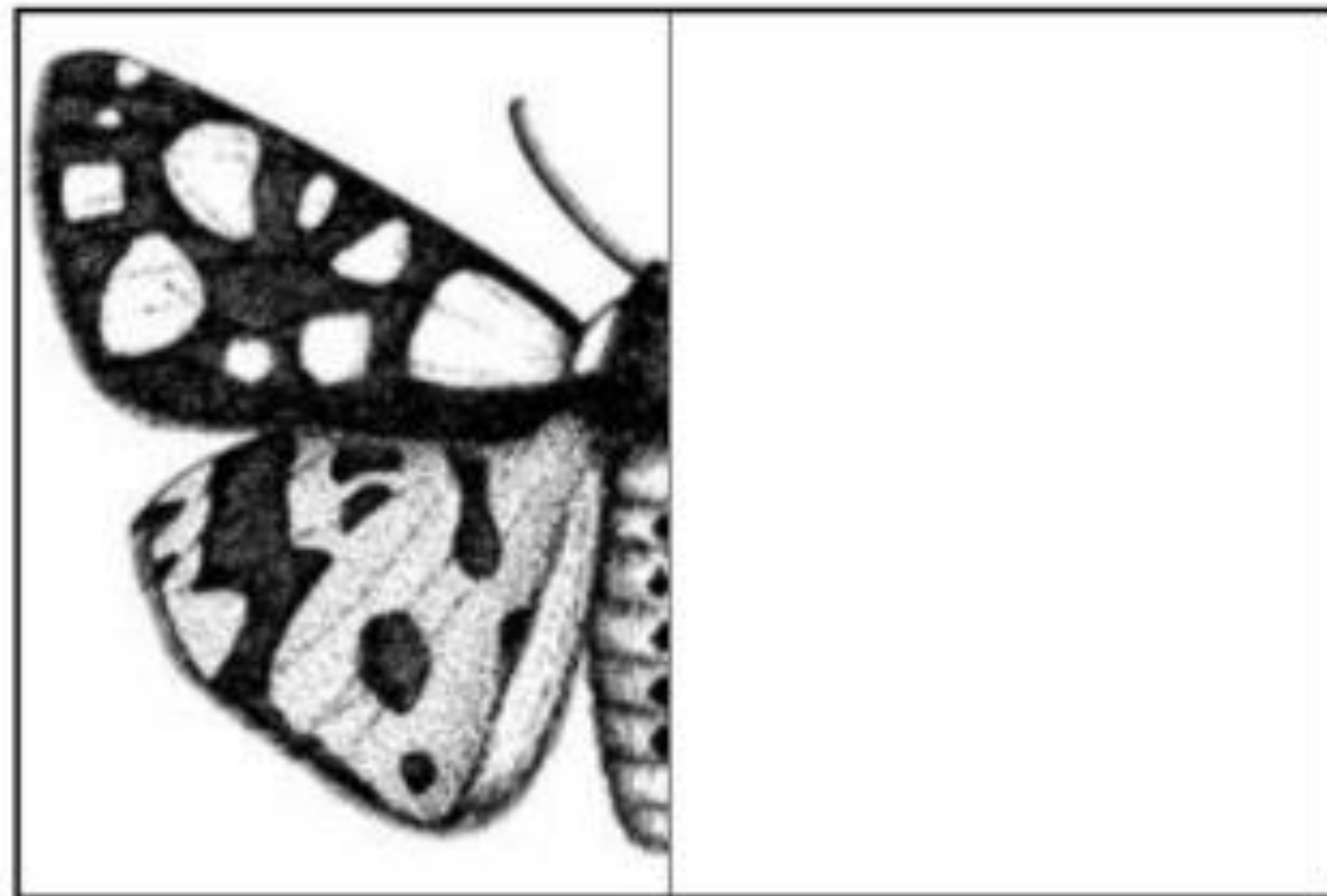
Your own opinion of the artist's work

WWW of your response drawing



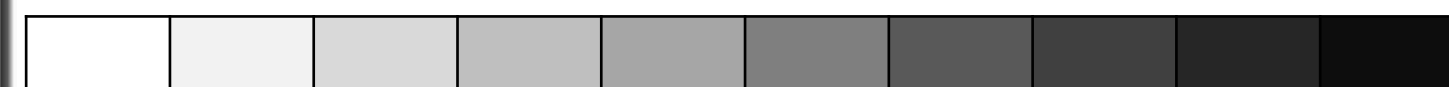
EBI of your response drawing

Your response drawing



Half and half drawing tasks 1: Use the image to guide you in completing the other half of the drawing.

- If you are unable to print the work, draw a neat presentation box and complete your drawings in there
- You should complete the drawings using as much details possible
- Add tone (between 5 and 7) by using different pencil pressures and layering

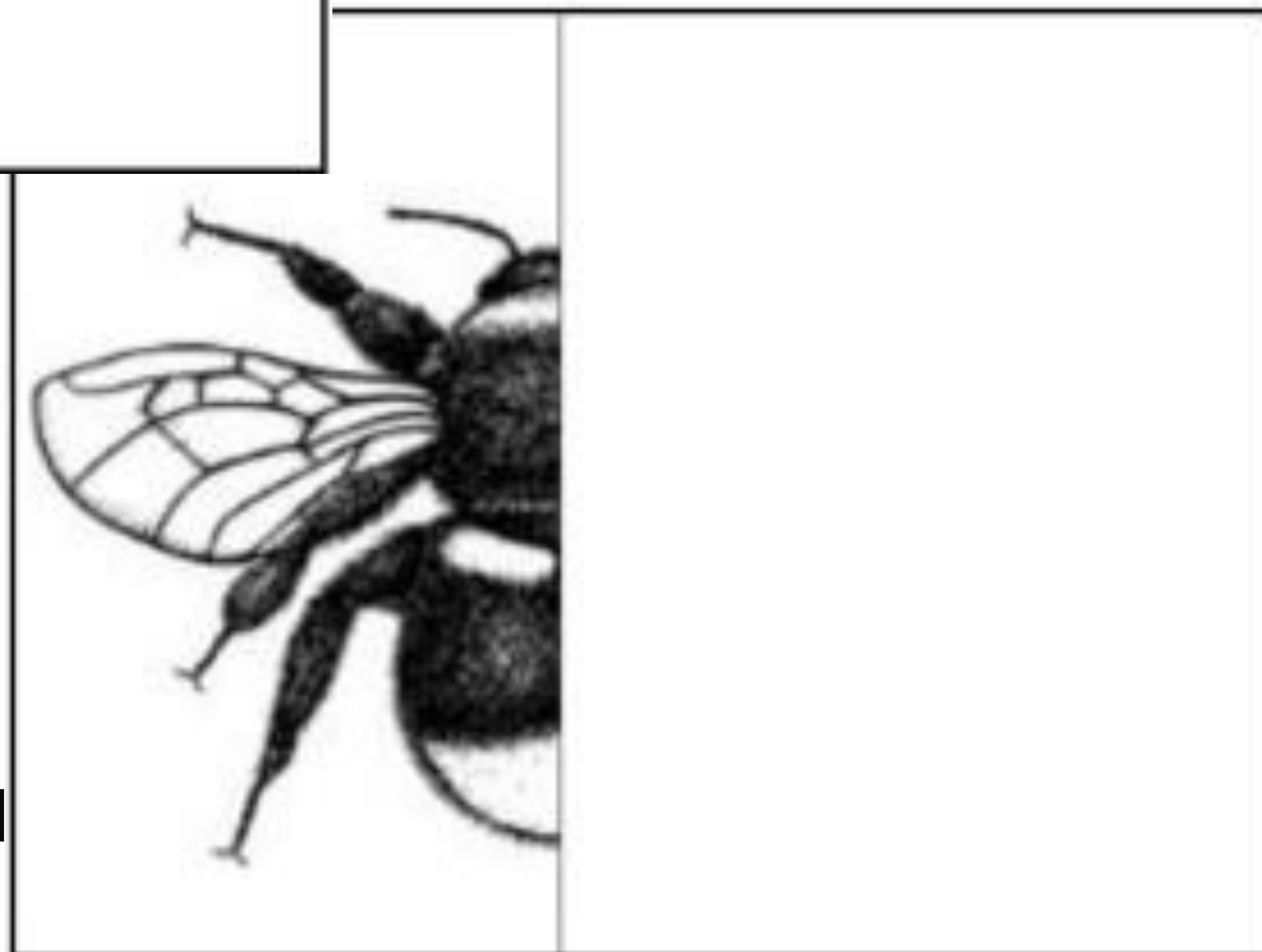


Extension task:

Create your own 'half and half' insect drawing.

Add colour to one half and make sure you use tonal shading (light to dark)

Complete the second half in the style of your choice (you may wish to colour in using dots, use biro, or use a monochrome colour scheme (different shades of the same colour (see below for an example)



Half and half drawing stretch and challenge tasks 2: Use the image to guide you in completing the other half of the drawing. This is slightly harder than the previous drawings so take your time and concentrate!

- If you are unable to print the work, draw a neat presentation box and complete your drawings in there
- You should complete the drawings using as much detail as possible
- Add tone (between 5 and 7) by using different pencil pressures and layering
- You may go over the details with a pen to make them stand out once you have finished

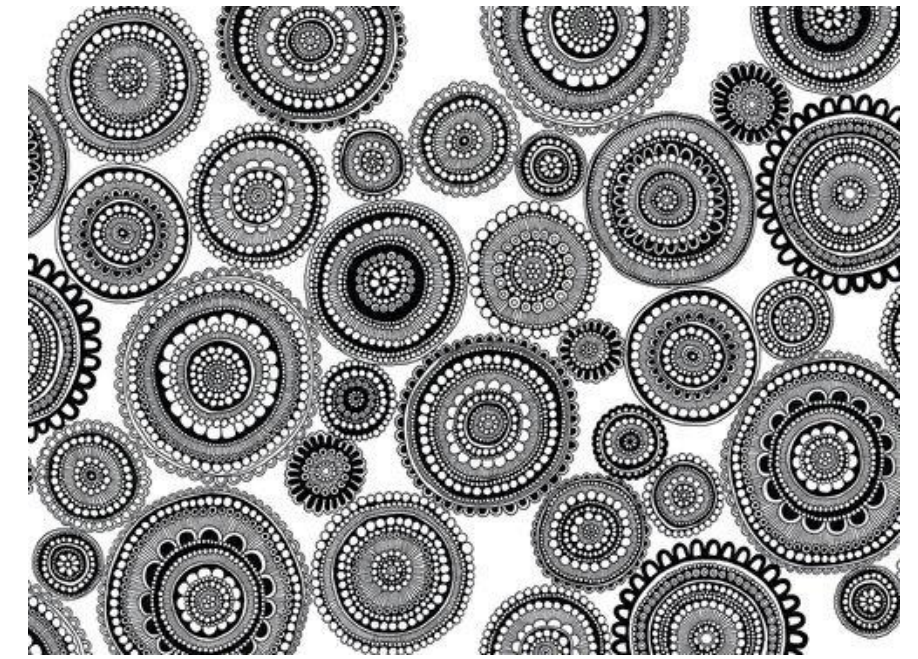
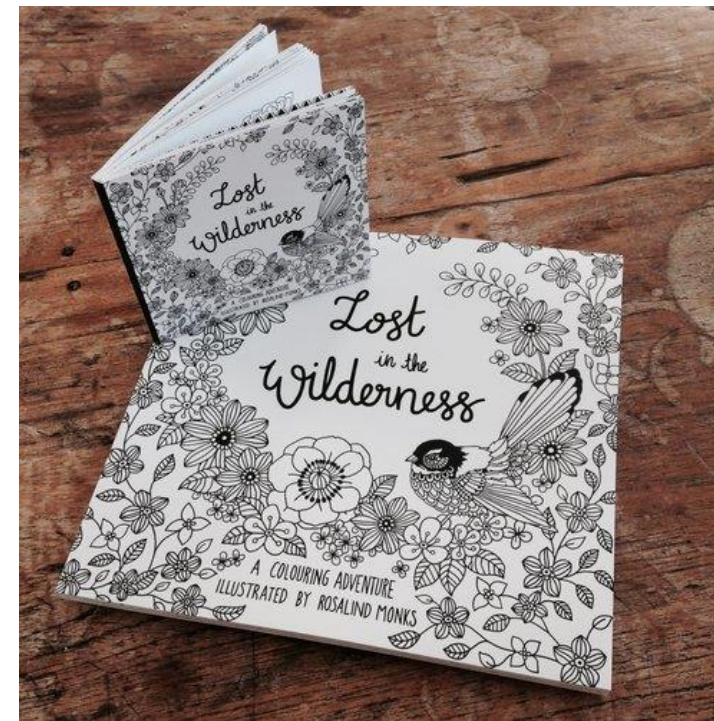




Rosalind Monks

Rosalind Monks

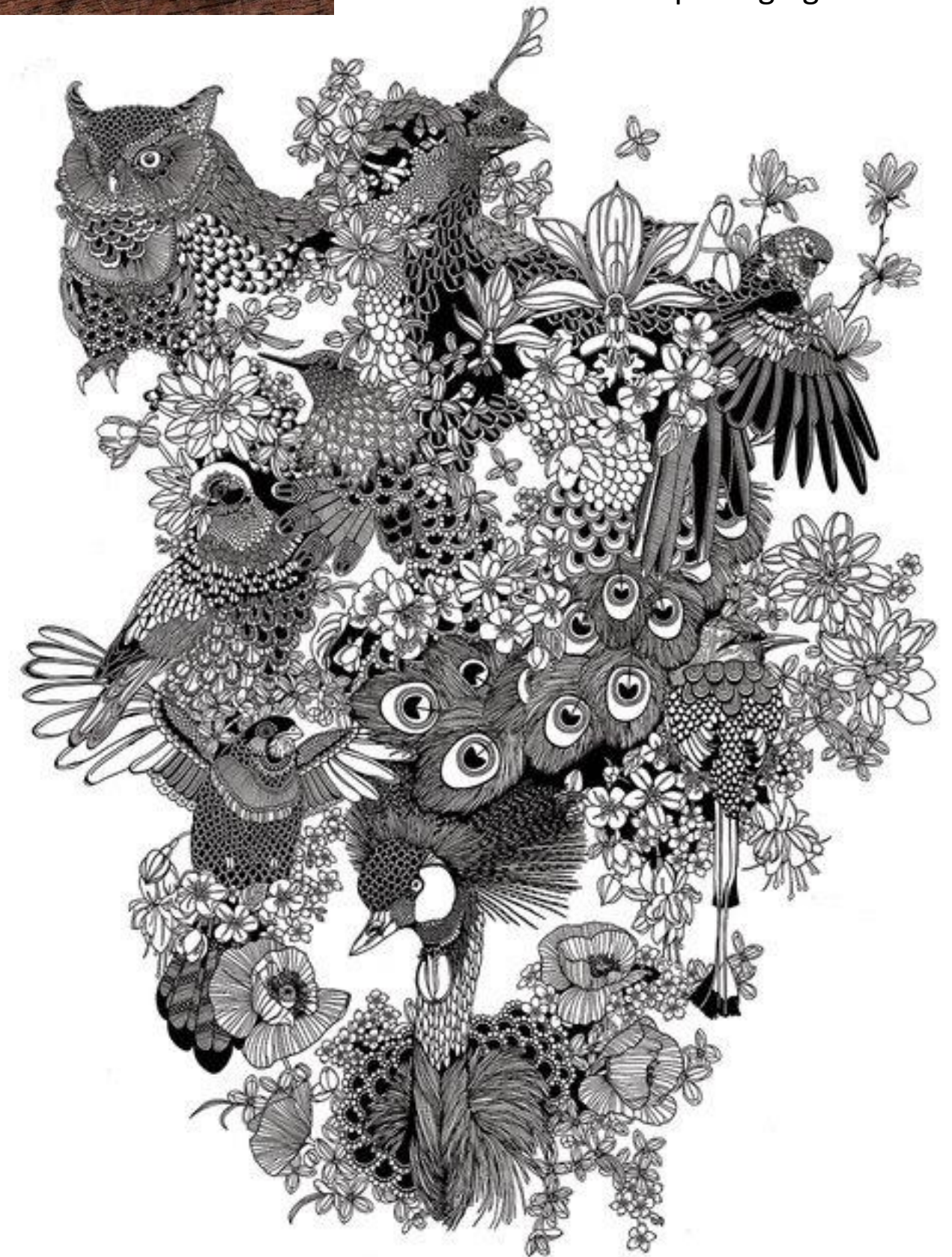
- Used intricate patterns and doodles, such as Zentangle
- She was inspired by the environment. She grew up in the Swiss countryside and spent time in Australia, New Zealand and the UK
- Her bold designs can be seen on skis, sunglasses, packaging and colouring books across the globe



Kleenex packaging

Artist. Free spirit. Seeker. Inspired by the environments and people around her, Rosalind divides her time between snowy mountains and ocean waves. Growing up in the Swiss countryside above Lake Geneva, Rosalind was always outdoors enjoying her lush surroundings, whether skiing or simply hiking through the woods near her house. Moving to the ocean for her university years Rosalind completed a BA Hons majoring in Illustration at the University of Brighton and began recreating the world around her in her own, bold style. After graduating the open road beckoned so Rosalind spent a year living out of a car circumnavigating Australia. Capturing the vivid colours and beautiful patterns inherent in the varied urban and natural environments she found, Rosalind's style continued to develop as she travelled. Now spending half the year in New Zealand, this fresh environment provides an abundance of rich, new stimuli as well as a vast playground for activity with its island environment dominated by both the mountains and sea.

"The more interesting my surroundings are the more I am inspired to draw" Rosalind's restless spirit also applies to the wide variety of products she has illustrated; her distinctively bold designs can be found across the Alps as the graphics on Faction skis, on the OZED sunglasses adorning French beach goers and as stand alone art pieces decorating the walls of various establishments across the globe. For Rosalind drawing is a way of taking what she loves from the world around her and visually processing it to create her own little universe in her head. She then feeds this directly into her beautiful images, one carefully drawn line at a time.





Rosalind Monks

